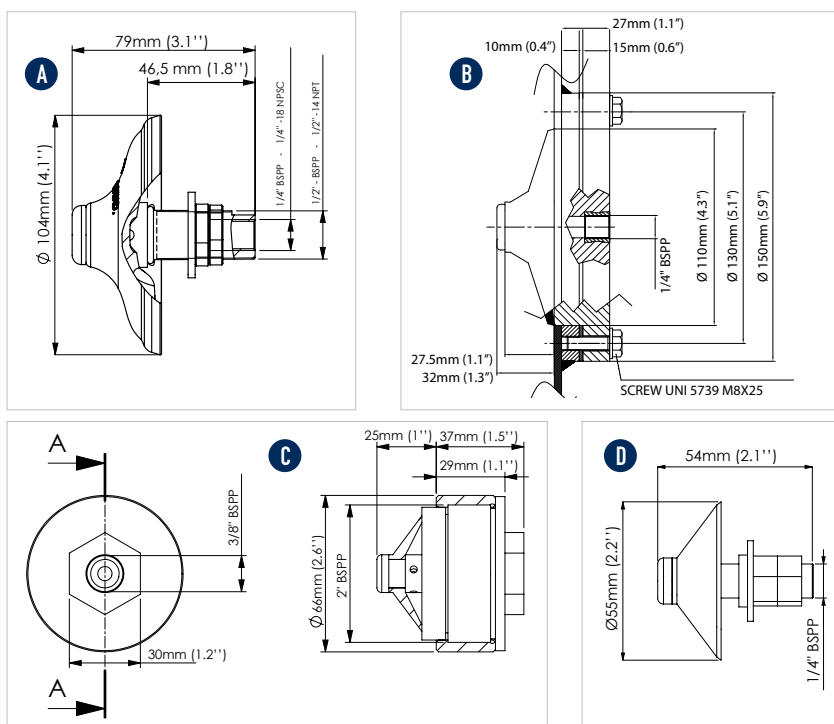




# VBS - Bin aerators



MODEL	DRAWING	MEMBRANE COLOUR	STEM MATERIAL	AIR CONSUMPTION								WORKING TEMPERATURE			
				0.8 bar (11.6 psi)		2 bar (29 psi)		4 bar (58 psi)		6 bar (87 psi)		°C		°F	
				l/min	Cfm	l/min	Cfm	l/min	Cfm	l/min	Cfm	Min.	Max.	Min.	Max.
VBS	A	White	Aluminium	600	20	800	28	950	33	1150	40	-40	170	-40	338
VBSI	A	White	Stainless steel	600	20	800	28	950	33	1150	40	-40	170	-40	338
VBSIHT	A	Red	Stainless steel	600	20	800	28	950	33	1150	40	-40	235	-40	455
VBSIMD	A	Blue	Stainless steel	600	20	800	28	950	33	1150	40	-40	170	-40	338
VBE	B	White	Nylon	-	-	100	3.53	150	5.29	250	8.82	-40	80	-40	176
VBSME	C	White	Nylon	130	4.6	150	5.3	-	-	-	-	-40	80	-40	176
VBSM	D	White	Aluminium	130	3.5	150	5	-	-	-	-	-40	170	-40	338
VBSMI	D	White	Stainless steel	130	3.5	150	5	-	-	-	-	-40	170	-40	338
VBSMIHT	D	Red	Stainless steel	130	3.5	150	5	-	-	-	-	-40	235	-40	455
VBSMIMD	D	Blue	Stainless steel	130	3.5	150	5	-	-	-	-	-40	170	-40	338

## VBS - BIN AERATORS

APPLICATION	Silos, hoppers, pipes
POWDER	Dry, fine, granular
PROBLEM SOLVING	Bridge and rat-holing

## FEATURES

DUTY CYCLE	Continuous or discontinuous
WORKING PRESSURE	From 0.8 bar to 6 bar (from 12 psi to 87 psi) - Suggested: 4 bar (58 psi) VBSMicro: from 0.8 bar to 2 bar (from 12 psi to 29 psi)
PNEUMATIC CIRCUIT	Filter + flow control valve
AIR SUPPLY QUALITY	Non-Lubricated (Class. 5.4.1)
TECHNOLOGY	Vibro-Aerator
MATERIAL	Silicone membrane [food grade] - FDA 177.2600 Aluminium / stainless steel stem [Food & Pharmaceutical grade] Nylon body with steel ring [VBSE]

## OPTIONS

EXTERNAL MOUNTING KIT	Stainless steel rectangular plate and fitting bracket
-----------------------	---

This information is furnished without warranty, representation, inducement or license of any kind. It is accurate to the best OLI knowledge or is obtained from sources believed to be accurate. OLI therefore assumes no legal responsibility.

